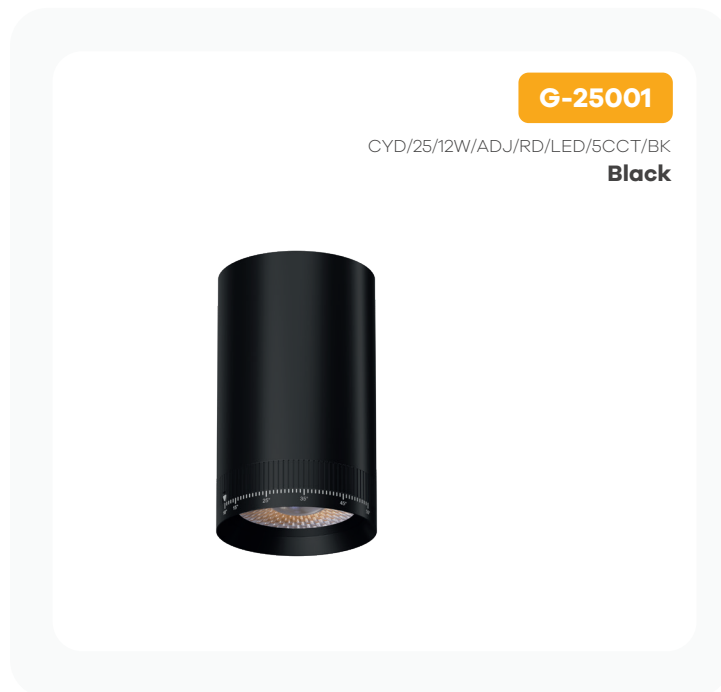


# Jupiter 2.50"

## Beam Adjustable Cylinder - Black

### Product Information

Color temp	27,30,35,41,50k
Output lumens	1000
Beam angle	20-55°
Input volts	120-277V
Wattage	12W
Height	4.31"
Width	2.56"
CRI	90
Dimmable	Yes
Pack	24



**G-25001**

CYD/25/12W/ADJ/RD/LED/5CCT/BK  
**Black**



2.5" Fixed Cylinder is compatible with mounting accessories listed below

### Accessories



#### Emergency LED Driver

15W G-48410  
25W G-95525  
30W G-48411  
60W G-95521



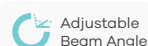
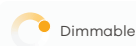
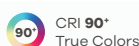
#### New Construction Plate

G-98800 (2) Punch Out  
To use with Recessed Mount Installations



#### G-05210 10FT Pendant Cord

Compatible with Pendant Options



# Mounting Options



**G-25071**

CYD/25/RD/MP/SM/BK  
**Surface Mount Monopoint**



**G-25061**

CYD/25/RD/MP/RCM/BK  
**Recessed Mount Monopoint**  
 CUT OUT 2.00"



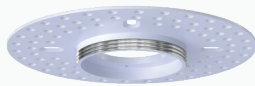
**G-25081**

TR/25/H/ADAPTER BK  
**H Track Adapter**



**G-25050**

CYD/25/RCM/JB  
**Recessed Mount J-Box**  
 CUT OUT 2.00"



**G-25051**

25/CYD/25/TL/MP  
**J-Box Mud Plate**



**G-12511**

CYD/25/RD/SM/BK  
**Surface Mount Canopy**



**G-12551**

CYD/25/RD/CM/BK  
**Conduit Mount Canopy**



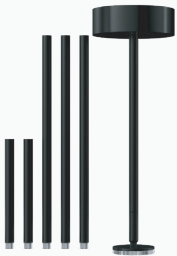
**G-12521**

CYD/25/RD/SM/PDT/BK  
**Surface Mount Pendant**  
 8FT Adjustable



**G-12531**

CYD/25/RD/RCM/PDT/BK  
**Recessed Mount Pendant**  
 8FT Adjustable  
 CUT OUT 2.00"

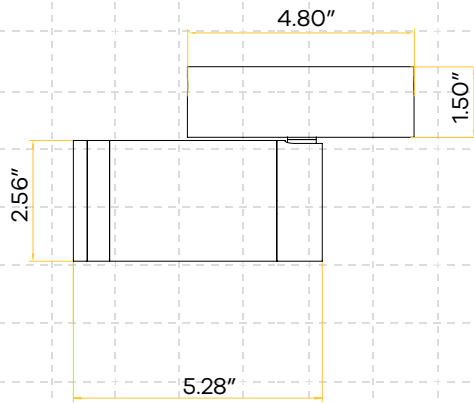


**G-12541**

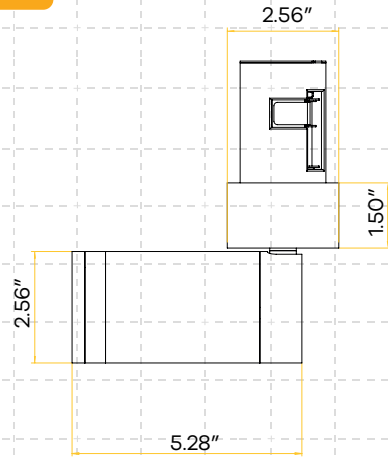
CYD/25/RD/SM/STM/BK  
**Surface Mount Stem**  
 4X12" & 2X6" Stems

**Dimensions:** Dimensions below, display the Beam Adjustable cylinder with mounting accessories combined. Fixed cylinders dimensions can be found on its spec sheet.

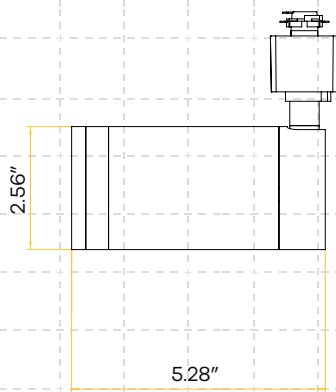
**G-25071**



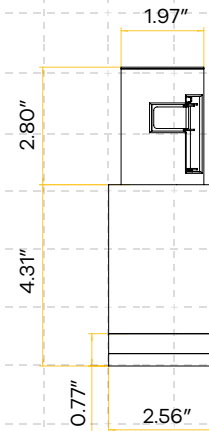
**G-25061**



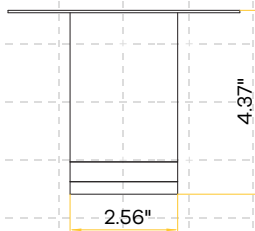
**G-25081**



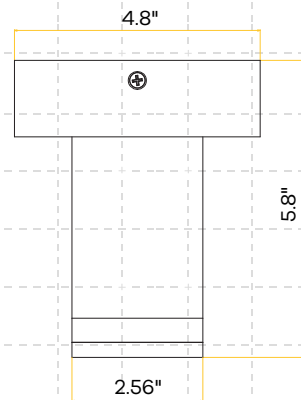
**G-25050**



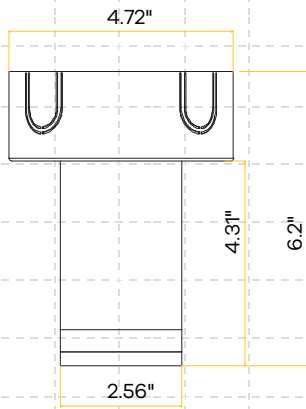
**G-25051**



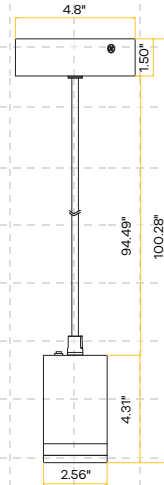
**G-12511**



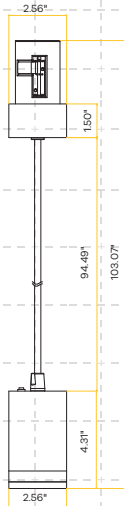
G-12551



G-12521



G-12531



G-12541

