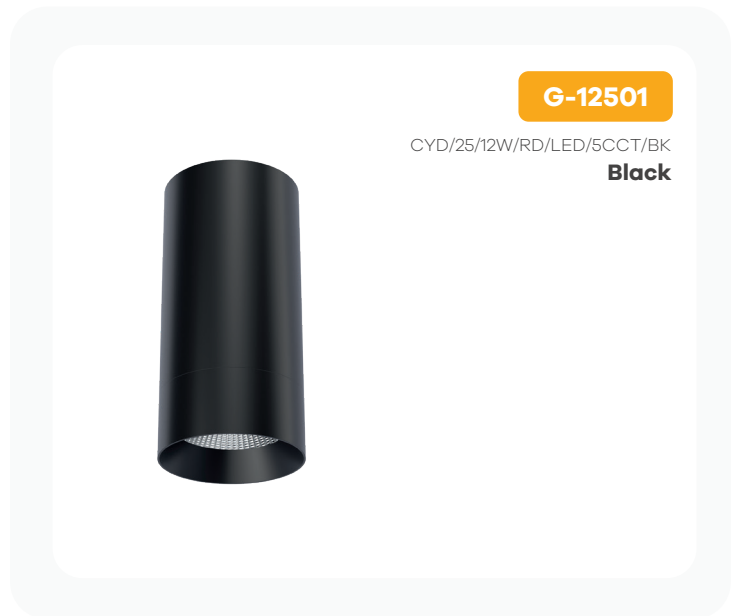


# Jupiter 2.50"

## Round Universal Cylinder - Black

### Product Information

Color temp	27,30,35,41,50k
Output lumens	1150
Beam angle	40°
Input volts	120-277V
Wattage	12W
Height	5.32"
Width	2.56"
CRI	90
Dimmable	Yes
Pack	18



**G-12501**

CYD/25/12W/RD/LED/5CCT/BK  
**Black**



2.5" Beam Adjustable Cylinder is compatible with mounting accessories listed below

### Lens Options

#### Reflector

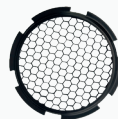


**G-12590**  
CYD/L25/24-DEGREE



**G-12591**  
CYD/L25/40-DEGREE

#### Diffuser



**G-12594**  
HEX/HC/25/DIFFUSER

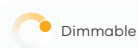
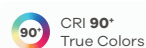
#### Lens Cover



**G-12592**  
25/PRISMETAC LENS



**G-12593**  
25/SOLITE LENS

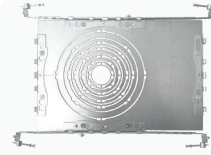


## Accessories



### Emergency LED Driver

15W G-48410  
25W G-95525  
30W G-48411  
60W G-95521



### New Construction Plate

G-98800 (2) Punch Out  
To use with Recessed Mount Installation



### G-05210 10FT Pendant Cord

Compatible with  
Pendant Options

## Mounting Options

**G-12511**

CYD/25/RD/SM/BK  
**Surface Mount  
Canopy**



**G-12551**

CYD/25/RD/CM/BK  
**Conduit Mount  
Canopy**



**G-12521**

CYD/25/RD/SM/PDT/BK  
**Surface Mount  
Pendant**  
8FT Adjustable



Up-light 100 Lumens

**G-12531**

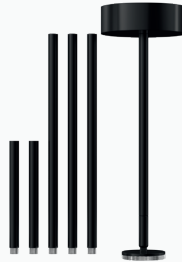
CYD/25/RD/RCM/PDT/BK  
**Recessed Mount  
Pendant**  
8FT Adjustable  
CUT OUT 2.00"



Up-light 100 Lumens

**G-12541**

CYD/25/RD/SM/STM/BK  
**Surface Mount  
Stem**  
4X12" & 2X6" Stems



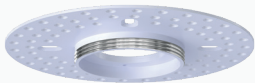
**G-25050**

CYD/25/RCM/JB  
**Recessed Mount  
J-Box**  
CUT OUT 2.00"



**G-25051**

25/CYD/25/TL/MP  
**J-Box Mud Plate**



**G-25071**

CYD/25/RD/MP/SM/BK  
**Surface Mount  
Monopoint**



**G-25061**

CYD/25/RD/MP/RCM/BK  
**Recessed Mount  
Monopoint**  
CUTOUT 2.00"



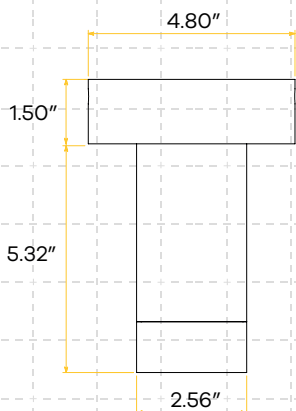
**G-25081**

TR/25/H/ADAPTER BK  
**H Track Adapter**

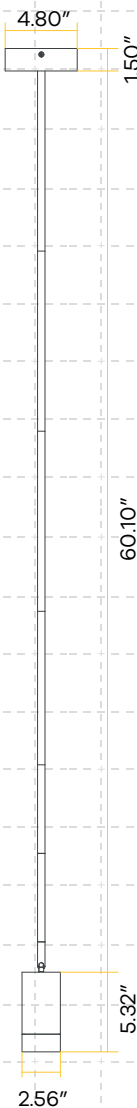


**Dimensions:** Dimensions below, display the Fixed cylinder with mounting accessories combined. Beam Adjustable cylinders dimensions can be found on its spec sheet.

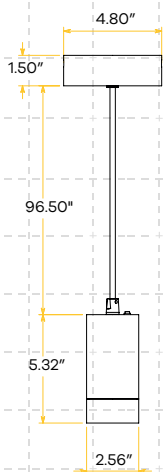
**G-12511**



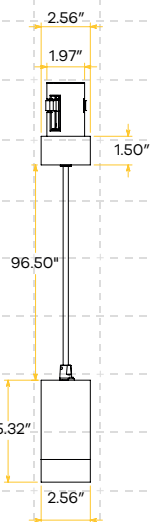
**G-12541**



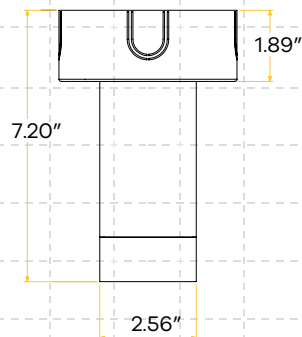
**G-12521**



**G-12531**

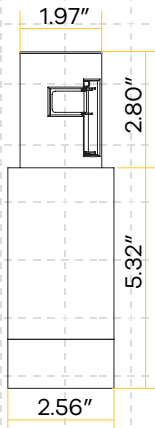


**G-12551**

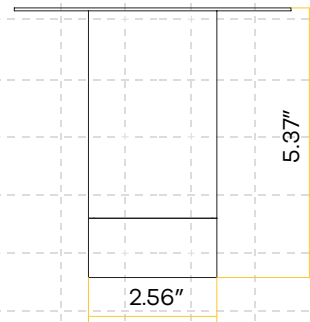


# Dimensions

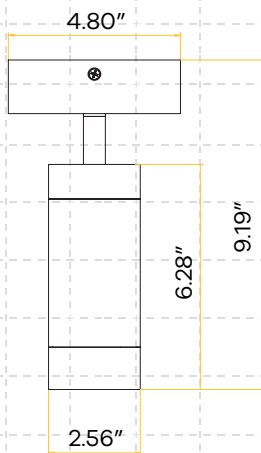
G-25050



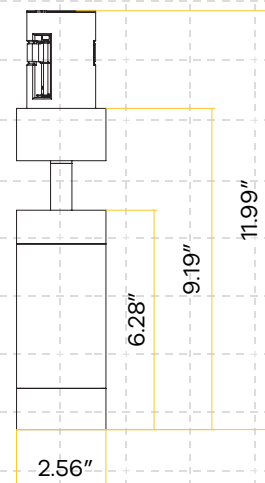
G-25051



G-25071



G-25061



G-25081

