

Jupiter 2.50"

Round Universal Cylinder - Bronze

Product Information

Color temp	27,30,35,41,50k
Output lumens	1150
Beam angle	40°
Input volts	120-277V
Wattage	12W
Height	5.32"
Width	2.56"
CRI	90
Dimmable	Yes
Pack	18



Lens Options

Reflector

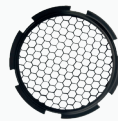


G-12590
CYD/L25/24-DEGREE



G-12591
CYD/L25/40-DEGREE

Diffuser



G-12594
HEX/HC/25/DIFFUSER

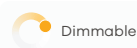
Lens Cover



G-12592
25/PRISMETAC LENS



G-12593
25/SOLITE LENS

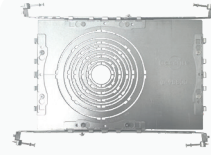


Accessories



Emergency LED Driver

15W G-48410
 25W G-95525
 30W G-48411
 60W G-95521



New Construction Plate

G-98800 (2) Punch Out
 To use with Recessed Mount Installation



G-05210 10FT Pendant Cord

Compatible with
 Pendant Options

Mounting Options



G-12512

CYD/25/RD/SM/BZ
**Surface Mount
 Canopy**



G-12522

CYD/25/RD/SM/PDT/BZ
**Surface Mount
 Pendant**
 8FT Adjustable

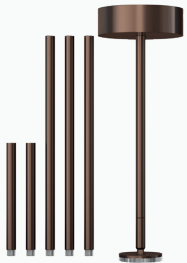
Up-light 100 Lumens



G-12532

CYD/25/RD/RCM/PDT/BZ
**Recessed Mount
 Pendant**
 8FT Adjustable
 CUT OUT 2.00"

Up-light 100 Lumens



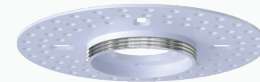
G-12542

CYD/25/RD/SM/STM/BZ
**Surface Mount
 Stem**
 4X12" & 2X6" Stems



G-25050

CYD/25/RCM/JB
**Recessed Mount
 J-Box**
 CUT OUT 2.00"

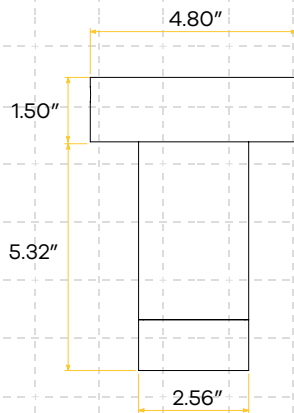


G-25051

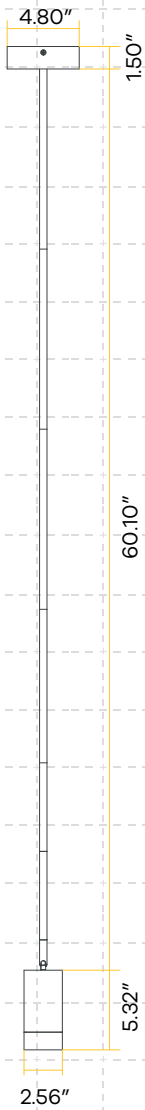
25/CYD/25/TL/MP
J-Box Mud Plate

Dimensions

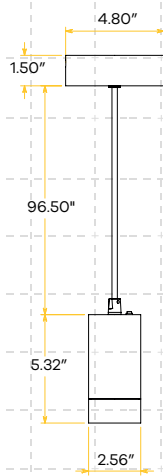
G-12512



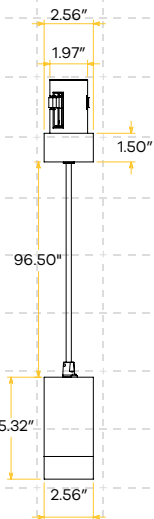
G-12542



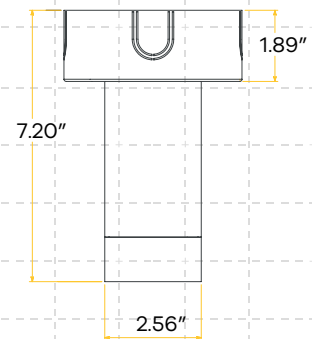
G-12522



G-12532



G-12552



Dimensions

