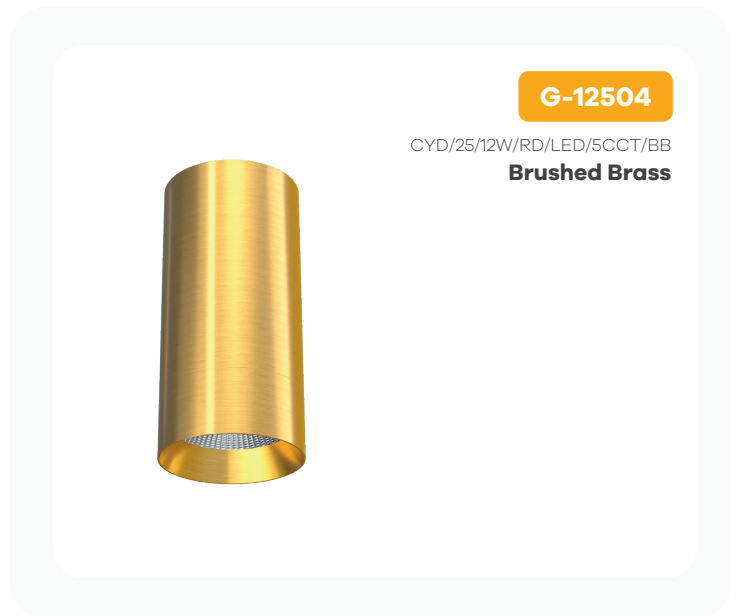


Jupiter 2.50"

Round Universal Cylinder - Brushed Brass

Product Information

Color temp	27,30,35,41,50k
Output lumens	1150
Beam angle	40°
Input volts	120-277V
Wattage	12W
Height	5.32"
Width	2.56"
CRI	90
Dimmable	Yes
Pack	18



Lens Options

Reflector

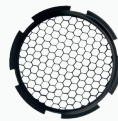


G-12590
CYD/L25/24-DEGREE



G-12591
CYD/L25/40-DEGREE

Diffuser



G-12594
HEX/HC/25/DIFFUSER

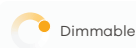
Lens Cover



G-12592
25/PRISMETAC LENS



G-12593
25/SOLITE LENS

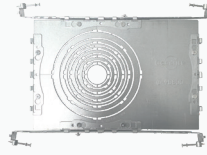


Accessories



Emergency LED Driver

15W G-48410
25W G-95525
30W G-48411
60W G-95521



New Construction Plate

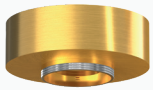
G-98800 (2) Punch Out
To use with Recessed Mount Installation



G-05210 10FT Pendant Cord

Compatible with
Pendant Options

Mounting Options



G-12514

CYD/25/RD/SM/BB
**Surface Mount
Canopy**



G-12524

CYD/25/RD/SM/PDT/BB
**Surface Mount
Pendant**
8FT Adjustable

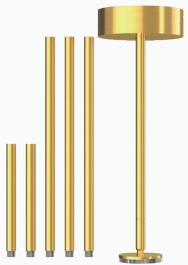
Up-light 100 Lumens



G-12534

CYD/25/RD/RCM/PDT/BB
**Recessed Mount
Pendant**
8FT Adjustable
CUT OUT 2.00"

Up-light 100 Lumens



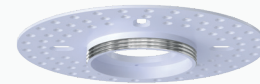
G-12544

CYD/25/RD/SM/STM/BB
**Surface Mount
Stem**
4X12" & 2X6" Stems



G-25050

CYD/25/RCM/JB
**Recessed Mount
J-Box**
CUT OUT 2.00"

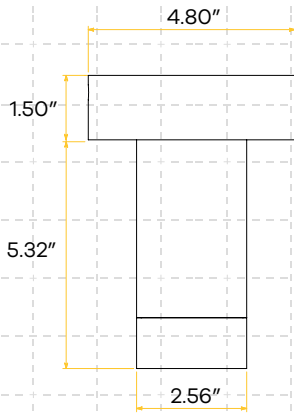


G-25051

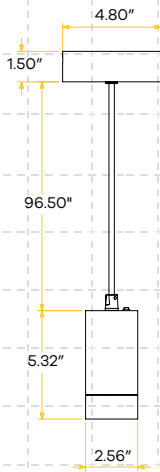
25/CYD/25/TL/MP
J-Box Mud Plate

Dimensions

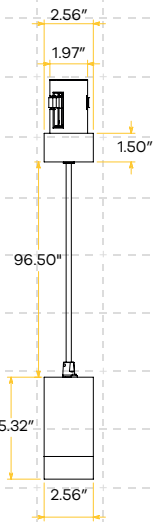
G-12514



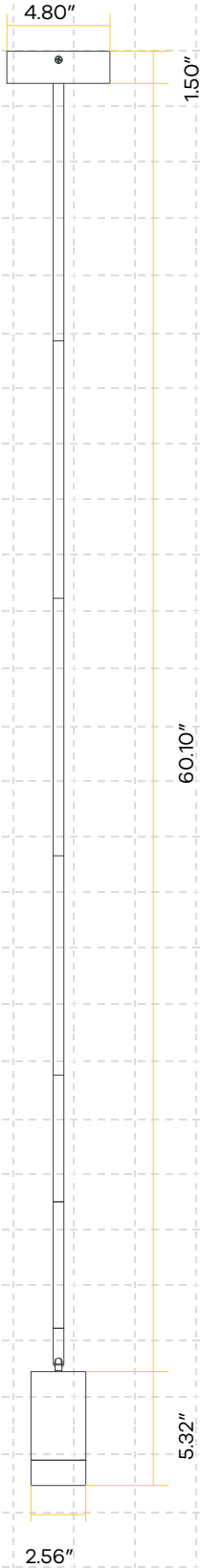
G-12524



G-12534

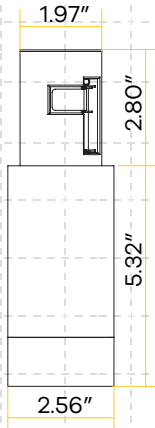


G-12544



Dimensions

G-25050



G-25051

