

# Jupiter 2.50"

## Round Universal Cylinder - White

### Product Information

Color temp	27,30,35,41,50k
Output lumens	1150
Beam angle	40°
Input volts	120-277V
Wattage	12W
Height	5.32"
Width	2.56"
CRI	90
Dimmable	Yes
Pack	18



2.5" Beam Adjustable Cylinder is compatible with mounting accessories listed below

### Lens Options

#### Reflector



**G-12590**  
CYD/L25/24-DEGREE



**G-12591**  
CYD/L25/40-DEGREE

#### Diffuser



**G-12594**  
HEX/HC/25/DIFFUSER

#### Lens Cover



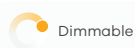
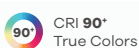
**G-12592**  
25/PRISMETAC LENS



**G-12593**  
25/SOLITE LENS



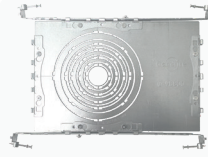
Selectable Color



## Accessories



**Emergency LED Driver**  
 15W G-48410  
 25W G-95525  
 30W G-48411  
 60W G-95521



**New Construction Plate**  
 G-98800 (2) Punch Out  
 To use with Recessed Mount Installation



**G-05110  
 10FT Pendant Cord**  
 Compatible with  
 Pendant Options

## Mounting Options



**G-12510**  
 CYD/25/RD/SM/WH  
**Surface Mount  
 Canopy**



**G-12550**  
 CYD/25/RD/CM/WH  
**Conduit Mount  
 Canopy**



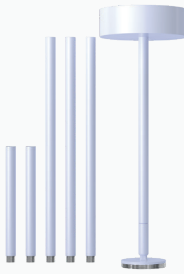
**G-12520**  
 CYD/25/RD/SM/PDT/WH  
**Surface Mount  
 Pendant**  
 8FT Adjustable

Up-light 100 Lumens



**G-12530**  
 CYD/25/RD/RCM/PDT/WH  
**Recessed Mount  
 Pendant**  
 8FT Adjustable  
 CUT OUT 2.00"

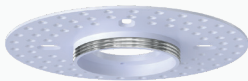
Up-light 100 Lumens



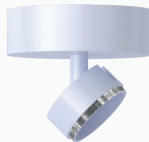
**G-12540**  
 CYD/25/RD/SM/STM/WH  
**Surface Mount  
 Stem**  
 4X12" & 2X6" Stems



**G-25050**  
 CYD/25/RCM/JB  
**Recessed Mount  
 J-Box**  
 CUT OUT 2.00"



**G-25051**  
 25/CYD/25/TL/MP  
**J-Box Mud Plate**



**G-25070**  
 CYD/25/RD/MP/SM/WH  
**Surface Mount  
 Monopoint**



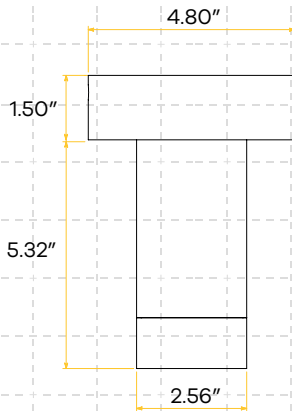
**G-25060**  
 CYD/25/RD/MP/RCM/WH  
**Recessed Mount  
 Monopoint**  
 CUT OUT 2.00"



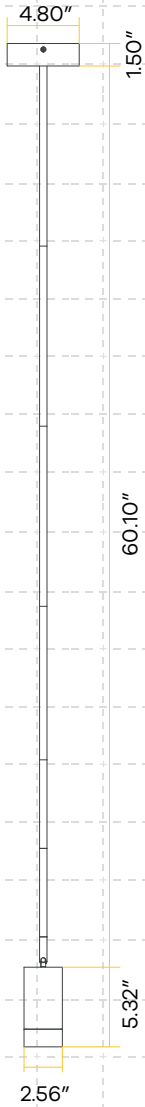
**G-25080**  
 TR/25/H/ADAPTER WH  
**H Track Adapter**

**Dimensions:** Dimensions below, display the Fixed cylinder with mounting accessories combined. Beam Adjustable cylinders dimensions can be found on its spec sheet.

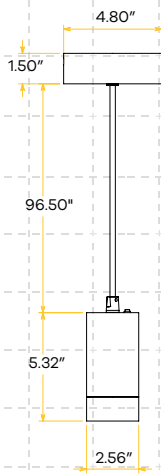
**G-12510**



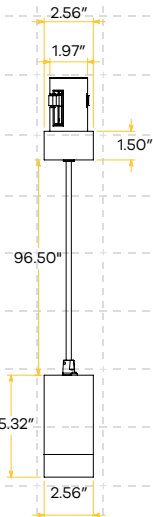
**G-12540**



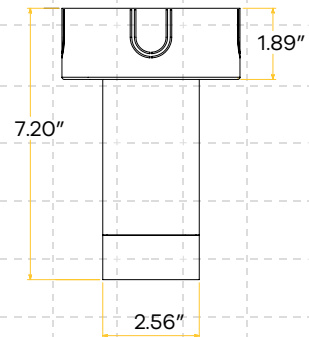
**G-12520**



**G-12530**

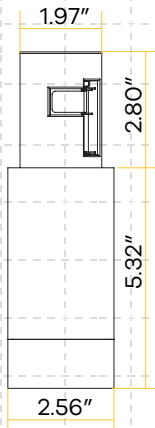


**G-12550**

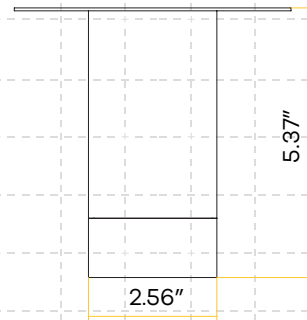


# Dimensions

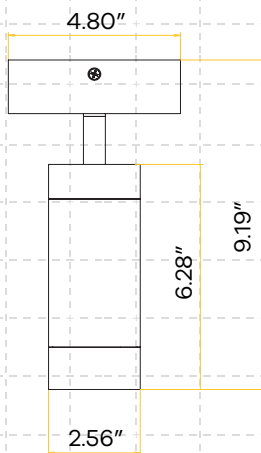
G-25050



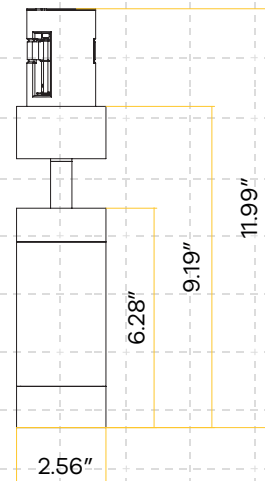
G-25051



G-25070



G-25060



G-25080

