

# Jupiter 3.30"

## Beam Adjustable Cylinder - Black

### Product Information

Color temp	27,30,35,41,50k
Output lumens	2000
Beam angle	20-55°
Input volts	120-277V
Wattage	22W
Height	4.72"
Width	3.35"
CRI	90
Dimmable	Triac or 0-10v
Pack	24



**G-33001**

CYD/33/22W/ADJ/RD/LED/5CCT/BK  
**Black**

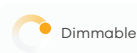
### Accessories



**Emergency LED Driver**  
 25W G-95525  
 30W G-48411  
 60W G-95521



**New Construction Plate**  
 G-98800 (3) Punch Out  
 To use with Recessed Mount Installations



## Mounting Options



**G-33071**

CYD/33/RD/MP/SM/BK  
**Surface Mount  
 Monopoint**



**G-33061**

CYD/33/RD/MP/RCM/BK  
**Recessed Mount  
 Monopoint**  
 CUT OUT 2.36"



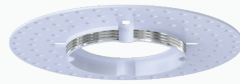
**G-33081**

TR/33/H/ADAPTER BK  
**H Track Adapter**



**G-33050**

CYD/33/RCM/JP  
**Recessed Mount  
 J-Box**  
 CUT OUT 2.36"

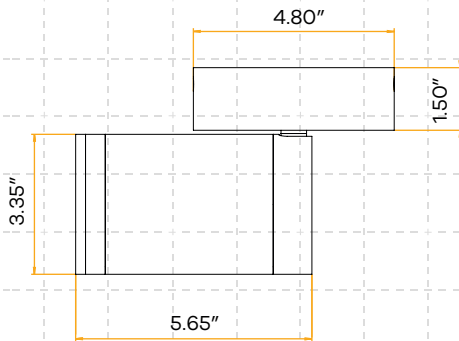


**G-33051**

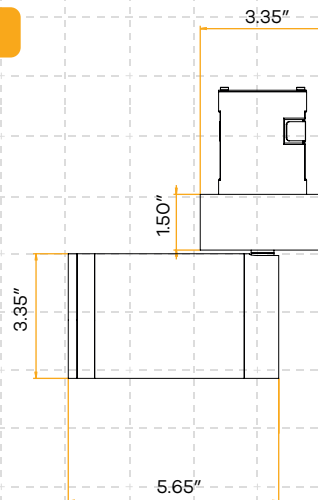
CYD/33/TL/MP  
**J-Box Mud Plate**

## Dimensions

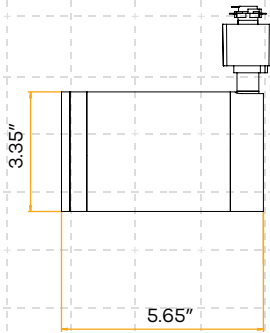
**G-33071**



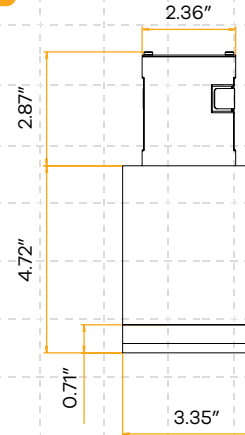
**G-33061**



G-33081



G-33050



G-33051

