

Jupiter 3.70"

Beam Adjustable Cylinder - Black

Product Information

Color temp	27,30,35,41,50k
Output lumens	2600
Beam angle	20-55°
Input volts	120-277V
Wattage	28W
Height	5.55"
Width	3.74"
CRI	90
Dimmable	Triac or 0-10v
Pack	24



G-37001

CYD/37/28W/ADJ/RD/LED/5CCT/BK
Black

Accessories



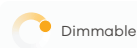
Emergency LED Driver

25W G-95525
30W G-48411
60W G-95521



New Construction Plate

G-98800 (3) Punch Out
To use with Recessed Mount Installations



Mounting Options



G-37071

CYD/37/RD/MP/SM/BK
**Surface Mount
 Monopoint**



G-37061

CYD/37/RD/MP/RCM/BK
**Recessed Mount
 Monopoint**
 CUT OUT 2.36"



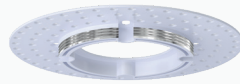
G-37081

TR/37/H/ADAPTER BK
H Track Adapter



G-37050

CYD/37/RCM/JP
**Recessed Mount
 J-Box**
 CUT OUT 2.36"

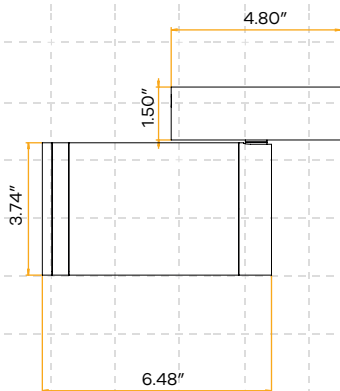


G-37051

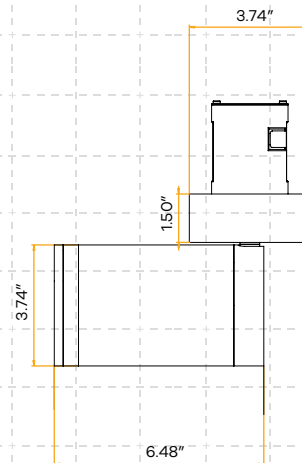
CYD/37/TL/MP
J-Box Mud Plate

Dimensions

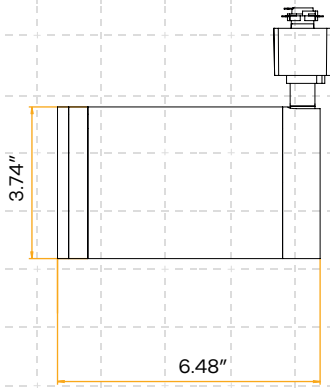
G-37071



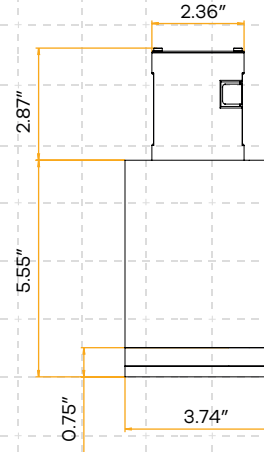
G-37061



G-37081



G-37050



G-37051

