

Jupiter 3"

Beam Adjustable Cylinder - Black

Product Information

| | |
|---------------|-----------------|
| Color temp | 27,30,35,41,50k |
| Output lumens | 1600 |
| Beam angle | 20-55° |
| Input volts | 120-277V |
| Wattage | 18W |
| Height | 4.92" |
| Width | 3.07" |
| CRI | 90 |
| Dimmable | Triac or 0-10v |
| Pack | 24 |



3" Fixed Cylinder is compatible with mounting accessories listed below

Accessories



Emergency LED Driver

25W G-95525
30W G-48411
60W G-95521



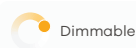
New Construction Plate

G-98800 (3) Punch Out
To use with Recessed Mount Installations



G-05210 10FT Pendant Cord

Compatible with Pendant Options



Mounting Options



G-30071

CYD/3/RD/MP/SM/BK
**Surface Mount
Monopoint**



G-30061

CYD/3/RD/MP/RCM/BK
**Recessed Mount
Monopoint**
CUT OUT 2.36"



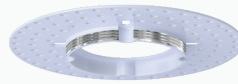
G-30081

TR/3/H/ADAPTER BK
H Track Adapter



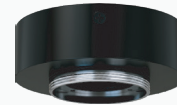
G-05229

CYD/3/RCM/JB
**Recessed Mount
J-Box**
CUT OUT 2.36"



G-05228

CYD/3/TL/MP
J-Box Mud Plate



G-05420

CYD/3/RD/SM/BK
**Surface Mount
Canopy**



G-05325

CYD/3/RD/CM/BK
**Conduit Mount
Canopy**



G-05421

CYD/3/RD/SM/PDT/BK
**Surface Mount
Pendant**
8FT Adjustable



G-05422

CYD/3/RD/RCM/PDT/BK
**Recessed Mount
Pendant**
CUT OUT 2.36"
8FT Adjustable

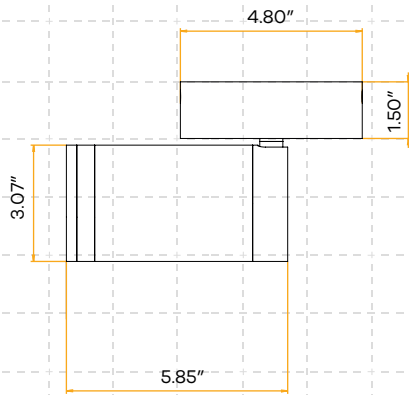


G-05423

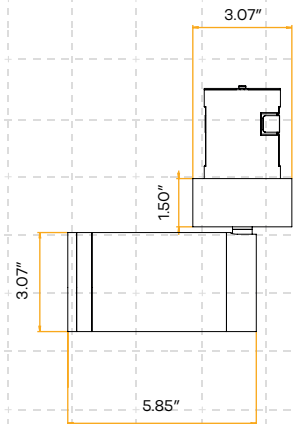
CYD/3/RD/SM/STM/BK
Surface Mount Stem
4x12"

Dimensions: Dimensions below, display the Beam Adjustable cylinder with mounting accessories combined. Fixed cylinders dimensions can be found on its spec sheet.

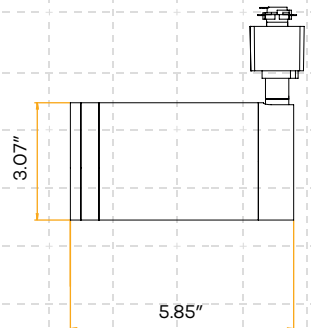
G-30071



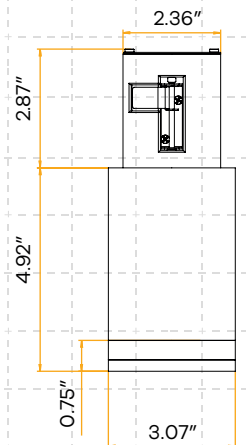
G-30061



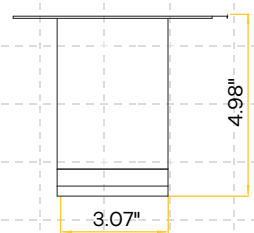
G-30081



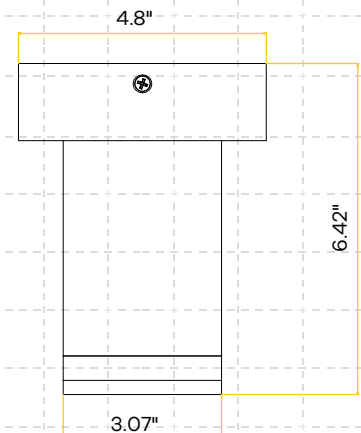
G-05229



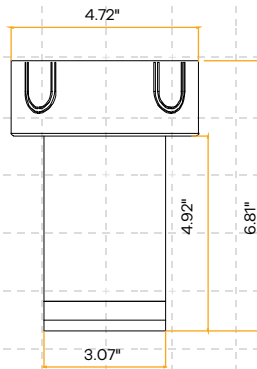
G-05228



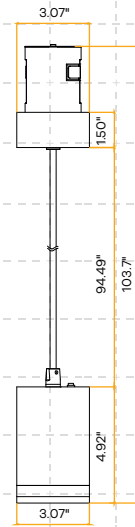
G-05420



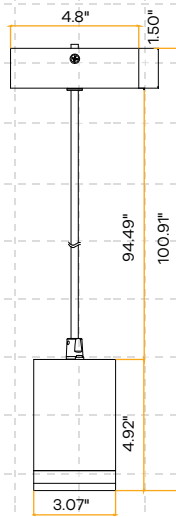
G-05325



G-05421



G-05422



G-05423

