

Jupiter 3"

Beam Adjustable Cylinder - White

Product Information

Color temp	27,30,35,41,50k
Output lumens	1600
Beam angle	20-55°
Input volts	120-277V
Wattage	18W
Height	4.92"
Width	3.07"
CRI	90
Dimmable	Triac or 0-10v
Pack	24



3" Fixed Cylinder is compatible with mounting accessories listed below

Accessories



Emergency LED Driver

25W G-95525
30W G-48411
60W G-95521



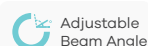
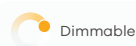
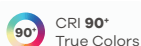
New Construction Plate

G-98800 (3) Punch Out
To use with Recessed Mount Installations



G-05110 10FT Pendant Cord

Compatible with Pendant Options



Mounting Options



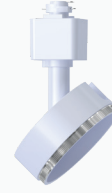
G-30070

CYD/3/RD/MP/SM/WH
**Surface Mount
 Monopoint**



G-30060

CYD/3/RD/MP/RCM/WH
**Recessed Mount
 Monopoint**
 CUT OUT 2.36"



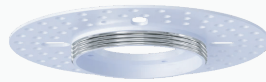
G-30080

TR/3/H/ADAPTER WH
H Track Adapter



G-05229

CYD/3/RCM/WH
**Recessed Mount
 J-Box**
 CUT OUT 2.36"



G-05228

CYD/3/TL/MP
J-Box Mud Plate



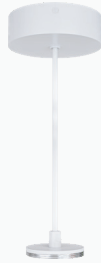
G-05320

CYD/3/RD/SM/WH
**Surface Mount
 Canopy**



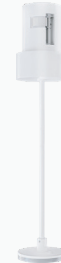
G-05324

CYD/3/RD/CM/WH
**Conduit Mount
 Canopy**



G-05322

CYD/3/RD/RCM/PDT/WH
**Surface Mount
 Pendant**
 8FT Adjustable



G-05321

CYD/3/RD/SM/PDT/WH
**Recessed Mount
 Pendant**
 CUT OUT 2.36"
 8FT Adjustable

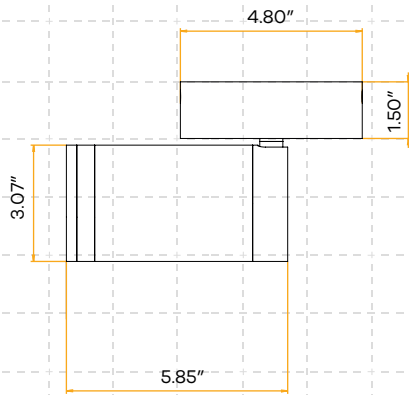


G-05323

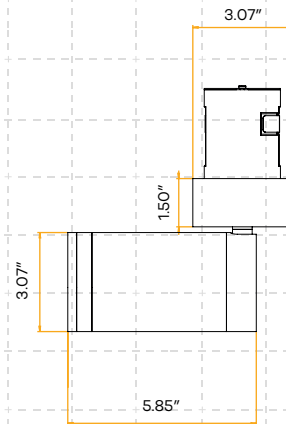
CYD/3/RD/SM/STM/WH
Surface Mount Stem
 4x12"

Dimensions: Dimensions below, display the Beam Adjustable cylinder with mounting accessories combined. Fixed cylinders dimensions can be found on its spec sheet.

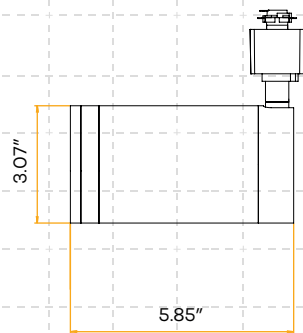
G-30070



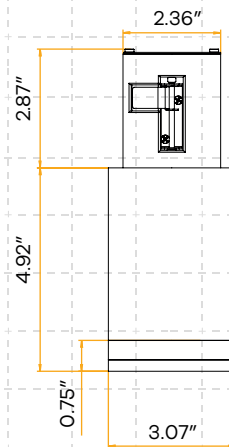
G-30060



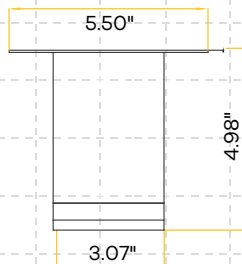
G-30081



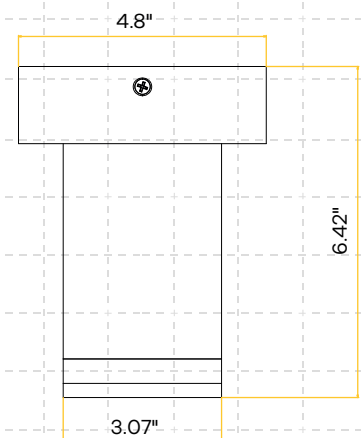
G-05229



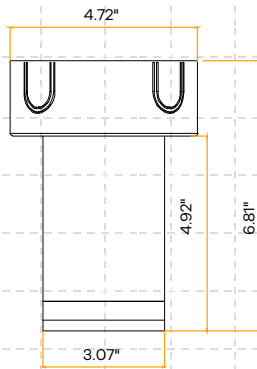
G-05228



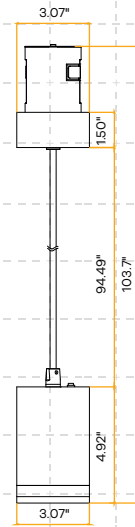
G-05320



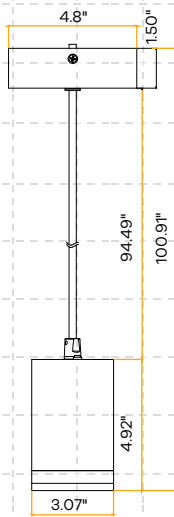
G-05324



G-05322



G-05321



G-05323

