

# Astrofit 4"

## Interchangeable Low Voltage Retrofit Module

### Product Information

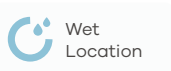
Description	M/R4/10W/5CCT/GU5.3/12V
Color temp	27, 30, 35, 41, 50k
Output lumens	1000
Beam angle	40° (Default)
Input volts	12V
Wattage	10W
CRI	90
Dimmable	No
Base Type	GU5.3
OD	5.31"
Height	3.35"
Packed	18



[See other Module options](#)

### Trim Options

[Round/Square Trims](#)



## Lens Options

### Clear Lens



**G-11022**  
L4/24-DEGREE



**G-11023**  
L4/40-DEGREE



**G-11024**  
L4/60-DEGREE

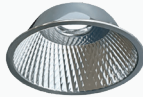


**G-11020**  
L4/FROSTED/80°

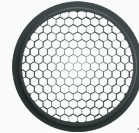
### Reflector Lens



**G-11025**  
L4/REFLECTOR/30°



**G-11026**  
L4/REFLECTOR/60°



**G-21440**  
4/HEX/HC/DIFFUSER

### Lens Covers



**G-21427**  
4/SOLITE LENS



**G-21428**  
4/PRISMATIC LENS



**G-21429**  
4/BEAMSPLIT LENS

## Accessories



### Emergency LED Driver

15W G-48410  
25W G-95525  
30W G-48411  
60W G-95521

## Dimensions

