

CCT Tape controller

INSTRUCTIONS, WIRING DIAGRAM, FEATURES, WARRANTY

Remote	Model	G-99720
	Energy	2 AAA Batteries (Included)
	Control distance	100 ft
	Max device control	Limitless
	Total zone	4
	CCT	CCT 27-65K

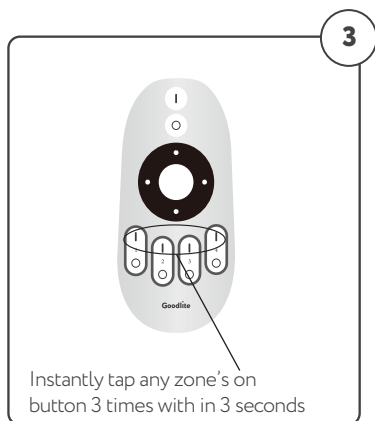
Controller	Model	G-99721
	Input	12-24 volts
	Max watt	(12v) - 188 watt (24v) 244 watt
	Terminal Diameter	26 - 14 AWG
	RF Control	2.4
	Comptible Wi-Fi apps	Tuya / Smart Life

RF

RF Linking Instructions

1 Press "SET" button on the controller for 12 seconds
or
Turn on & off the controllers power 4 times on-off-on-off-on-off-o

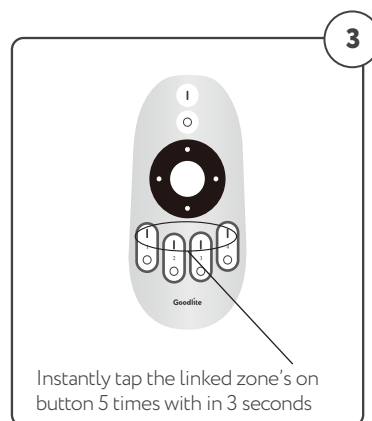
2 Turn on the light



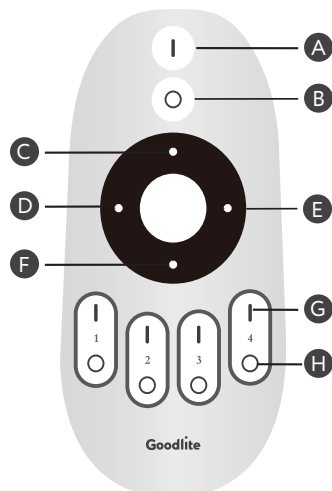
RF Unlinking Instructions

1 Press "SET" button on the controller for 12 seconds
or
Turn on & off the controllers power 4 times on-off-on-off-on-off-on

2 Turn on the light



Remote Guide



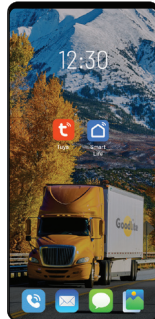
	Description	Function
A	Master ON switch	Turns on all connected devices
B	Master OFF switch	Turns off all connected devices
C	Cool CCT	Increases the kelvin temperature
D	Dimmer -	Decreases the brightness
E	Dimmer +	Increases the brightness
F	Warm CCT	Decreases the kelvin temperature
G	Group ON	Turns ON all grouped devices
H	Group OFF	Turns OFF all grouped devices

Wi-Fi linking instructions

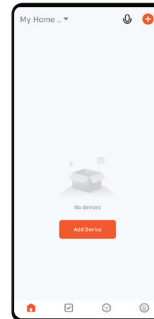
Wi-Fi

Tuya / Smartlife Linking Instructions

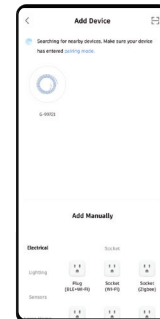
Press "SET" button on the controller for 12 seconds or Turn on & off the controllers power 4 times on-off-on-off-on-off-on
If the device hasnt been recognized then click + and add manually



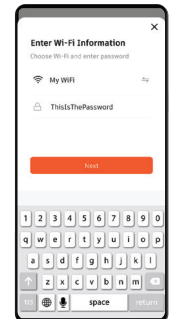
Install / Login to the app



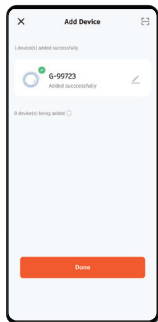
Enter the Tuya app & add the Controller



Once Controller has been recognized Tap device symbol to be added



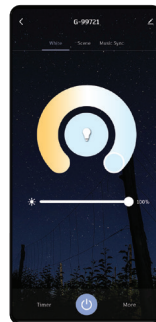
Enter your Wi-Fi information



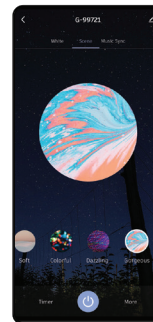
Once device has been successfully added Tap "Done" to enter device control



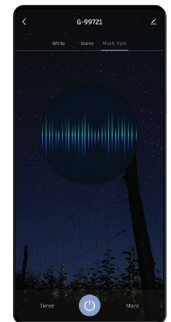
You have successfully entered the device control Tap on symbol to turn on the light



CCT CONTROL

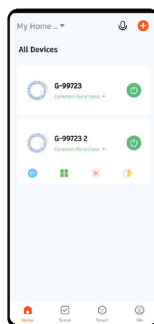


CCT PRESET SCENE



CCT MUSIC SCENE

1. Grouping multiple controllers instructions



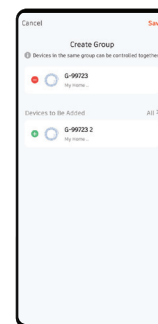
Open the app to home screen & select 1 controller symbol



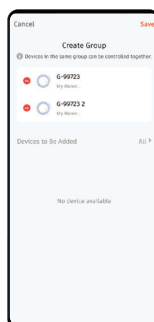
Tap the edit button located in the right top corner



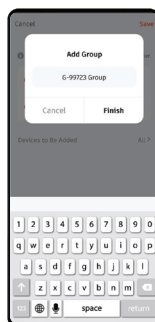
Select create group option



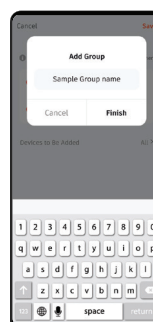
Add the controller's you'd like to have in the group



Once selected tap save located in the right top corner



Rename the group to your liking

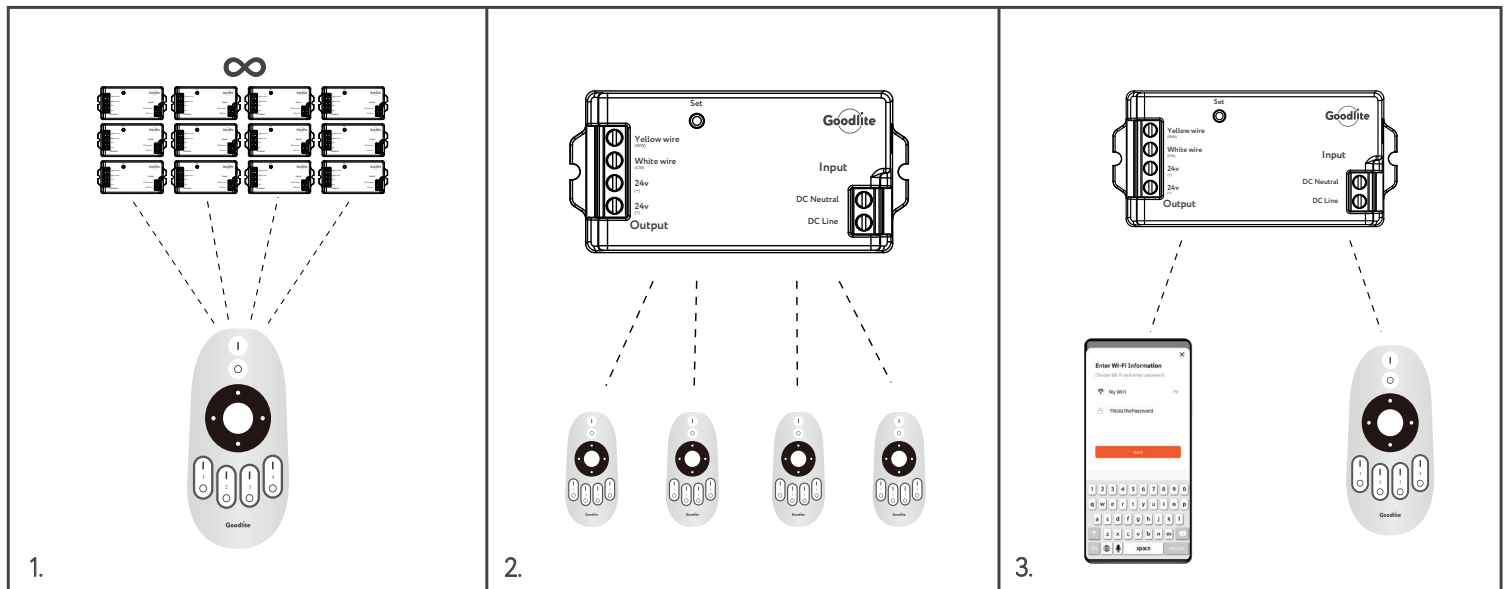


Tap finish once renamed



You have successfully created and entered the new group

1. One Zone can synchronously control unlimited controllers, as long as each controller is within 100 feet of the next.
2. One controller can be controlled & linked simultaneously to up to 4 other remotes
3. One controller can be controlled & linked simultaneously via Wi-Fi app & RF remote



Wiring Diagram

