

Recessed Lighting

INSTALLATION INSTRUCTIONS AND WARRANTY INFORMATION

- IMPORTANT** Read all instructions before installing plate. Retain for future reference.
- SAFETY:** Turn the power at off main fuse/breaker panel before attempting any electrical work. This luminaire must be wired in accordance with local electrical codes and ordinances. Grounding connections should be done in the detachable junction box.
- WARNING:** Make sure the power is OFF from the electrical panel before starting or installation attempting any maintenance.

DRIVER	Model	G-32520/G-32530
	Input	120-277 V AV 50/60Hz
	Output	33-38V DC 270MA
	Lamp Life	50000 Hours
	Operating Temperature	-40°C to +40°C
	Dimming	Triac dimming (120V AC input only) 0-10V dimming (120-277V AC input)
	DC Wire Type	FT6 DC Wire
LIGHT	Energy used	12 W
	Luminous Flux	1000LM
	Equivalent to:	120W halogen
	CCT Options	27K-30K-35K-40K-50K
	Beam Angle	20-55 Degree
	CRI	Ra>90
	Approved Location	Wet
MOUNTING	Wire Space	10Cubic inch
	OD	Φ 7.28"(185mm)
	ID	Φ 3.48"(88.5mm)
	Height	6.57"(167mm)
	Cut Out	Φ 3.85"(98mm)

Dimmer Compatibility List for LED Recessed Lights. Dimmable down to 10%				
Brand	Family	Model	Load (W)	12 W
LUTRON	Skylark Contour	LECL-153P	150W	1-12
		CTCL-150H	150W	1-12
		LGCL-153PLH	150W	1-12
		CTCL-153P	150W	1-12
		SCL-153P	150W	1-12
		S-600P	600W	1-16
	Caseta	PD-6WCL	600W	1-16
		PD-5NE	150W	1-12
		PD-10NXD	250W	1-16
	DIVA	DVCL-153P	150W	1-12
	Toggler	TGCL-153P	150W	1-12
	Ariadni	AYCL-153P	150W	1-12
	Maestro	MACL-153M	150W	1-12
LEVITON	Illuminatech	IPL06	150W	1-12
	SureSlide	6672	150W	1-12
EATON	Smart Dimmer	AAL06	300W	1-16

Installation

Pre Installation:

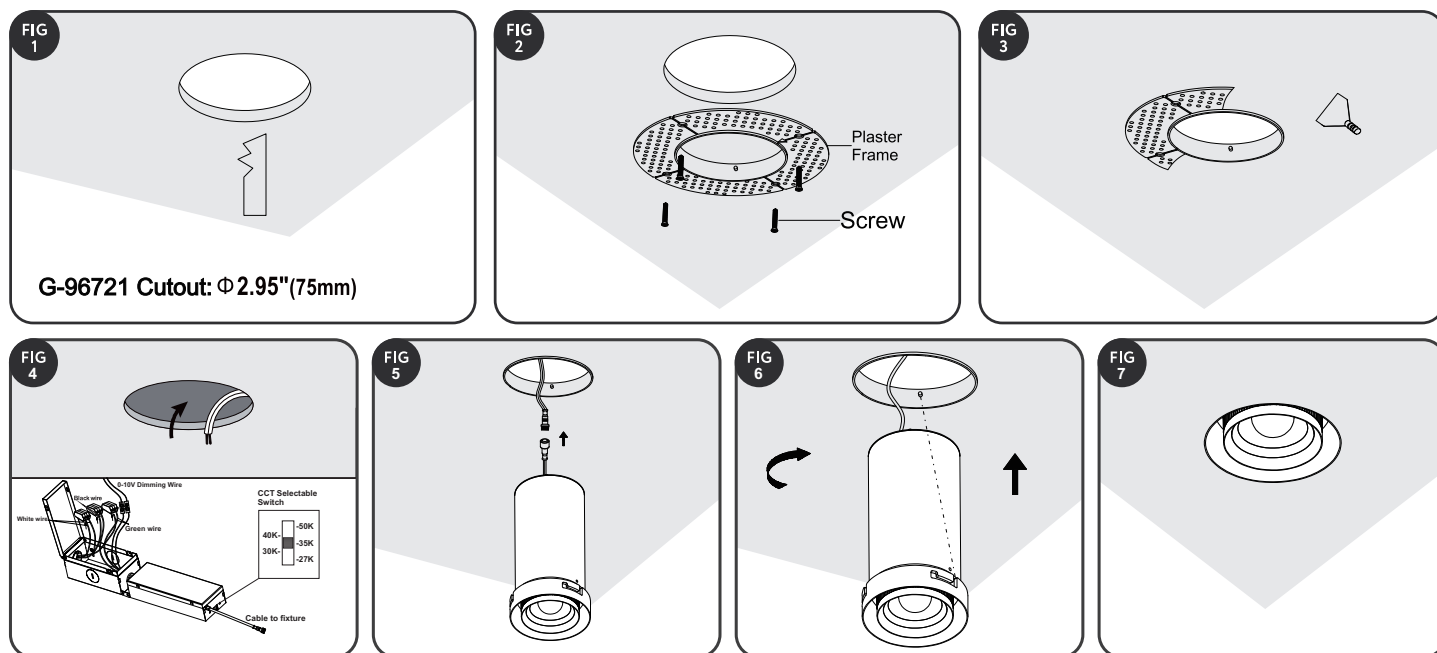
1. Turn power off from the electrical panel before installation.
2. Locate a suitable position to place the fixture and open in accordance to the cut-hole dimensions (cutout template included)(FIG.1)
3. Run electrical wire from the switch(power supply) through the mounting hole.
4. Align the inside edge of the Zero Clearance plaster frame to the drywall hole and screw in place.(FIG.2)
5. Plaster over the plaster frame, be careful not to fill past raised rim. (FIG.3)

Driver Wiring:

1. Open the driver box swing cover and remove the appropriate knockouts.
2. Insert the electrical supply cable through the knockout and secure with a cable connector(not included).
3. Using the push in quick connectors, connect the green ground wire of cable to the green wire on of box. Connect the white wire of cable to the white wire of box. Connect the black wire of the cable to the black wire of box. If using a 0-10V dimmer, Connect the Purple wire (Dim +) of the cable to the Purple wire of the driver box. Connect the Pink or Grey wire (Dim -) of the cable to the Pink or Grey wire of the driver box. (FIG.4)

Lighting Fixture Installation

1. Connect the DC connector of lighting fixture and the driver box. Checking if all wires are connected correctly. insert the driver box through the mounting hole.(FIG.5)
2. Twist the lighting fixture part appropriately onto the plaster frame.(FIG.6)
3. Turn on the power to confirm the lighting fixture working properly.



Triac DIMMING (120V only): We recommend LED/CFL dimmers that have a low range adjustment dial. After all fixtures are connected to the dimmer, adjust the dial to the lowest position before the lights start to flicker or shut down. This setting depends on the local voltage and number of fixtures per dimmer. For a typical LED dimmer rated for 150W LED load the maximum number of fixtures per dimmer.

0-10V DIMMING (120-277V AC): The dimming control wires are Grey/Pink wire (dim-) and Purple wire (dim+). Please connect the 0-10V dimmer and the driver purple wire to purple wire and Grey/Pink wire to Grey/Pink wire with the supplied block.

WARNING: DO NOT USE ANY OTHER DRIVERS EXCEPT THE DRIVERS THAT ARE INCLUDED WITH THE FIXTURE. DO NOT CONNECT MULTIPLE FIXTURES TO ONE DRIVER. DO NOT OPEN THE LIGHT FIXTURE OR THE SIDE PLATES OF THE DRIVER - NO SERVICEABLE PARTS INSIDE.

MANUFACTURER'S LIMITED WARRANTY

Your product, when delivered to you in new condition and in original packaging, is warranted against defects in materials and workmanship as follows for a period of 3 years from the date of the original purchase. Defective products returned and proven to be defective upon inspection will be repaired, replaced with a new Product or a credit will be issued against original invoice at the discretion of manufacturer.

To avoid any doubt, "the replacement Product" does not include any removal or installation costs or expenses, including without limitation labor costs or expenses, shipping costs to return defective products or any damages that may occur during the return of product. This limited warranty is subject to the following additional conditions:

1. Products must have been installed and operated in accordance with manufacturer's instructions.
2. Products have not been subjected to accident, neglect, abuse, misuse, lightning, electrical surges or acts of God.
3. The Product has been purchased directly from an authorized distributor.
4. Purchase receipt or invoice is available for inspection.
5. This warranty is limited to Products purchased for use in regions that are within jurisdiction of Canada and USA.

This device complies with part 15 of the FCC rules. Operation is subject to the following two conditions:

- (1) This device may not cause harmful interference.
- (2) This device must accept any interference received, including interference that may cause undesired operation.

THE FOREGOING WARRANTY IS EXCLUSIVE, AND THE SOLE REMEDY FOR ANY AND ALL CLAIMS. IN NO EVENT WILL THE MANUFACTURER BE LIABLE FOR ANY SPECIAL, COMPENSATORY, INDIRECT, PUNITIVE, OR INCIDENTAL OR CONSEQUENTIAL DAMAGES INCLUDING, WITHOUT LIMITATION, DAMAGES RESULTING FROM LOSS OF USE, PROFITS, BUSINESS OR GOODWILL, WHETHER OR NOT THE MANUFACTURER HAS BEEN ADVISED OF THE POSSIBILITY THEREOF.