

Commercial 3" Round Regress

INSTALLATION INSTRUCTIONS

CONSTRUCTION: 3" fixtures with integral LEDs. Isolated external driver factory installed inside junction box. One driver for every fixture required.
 Power Factor >0.95. LED fixture and driver are TYPE IC rated - approved for direct contact with insulation. Pot light housing is NOT required even for insulated ceilings. Lifespan: 50,000hours.

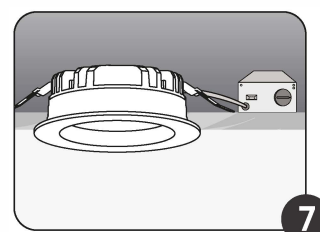
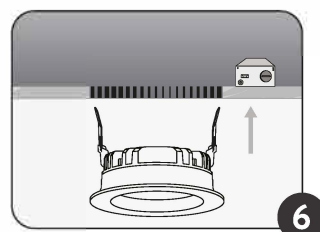
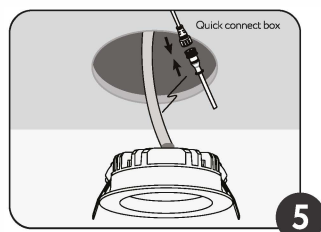
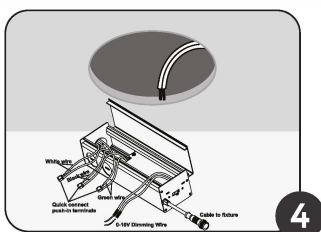
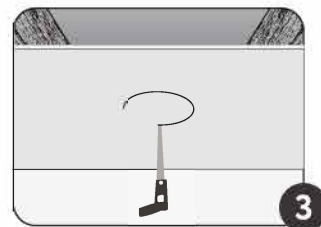
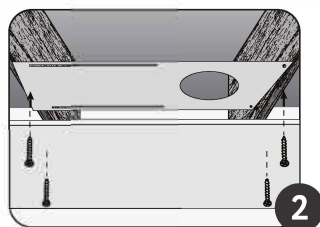
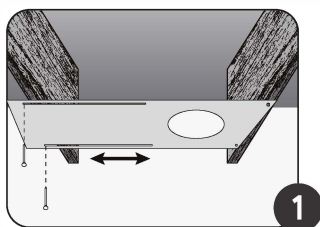
Suitable for Wet Location

DRIVER	Model	G-98521
	Input	120-277 V AV 50/60Hz
	Output	33-38V DC 230MA/355MA
	Lamp Life	50000 Hours
	Operating Temperature	-40°C to +40°C
LIGHT	Dimming	Triac dimming (120V AC input only) 0-10V dimming(120-277V AC input)
	Energy used	10W(IC Rated) / 15W(NON-IC)
	Luminous Flux	10W(800LM) / 15W(1150LM)
	Equivalent to:	125W halogen
	CCT Options	27K-30K-35K-40K-50K
	Beam Angle	110 Degree
	CRI	Ra>90
	Approved Location	Wet
MOUNTING	Wire Space	12 Cubic inch
	OD	3.7"(94mm)
	ID	1.97"(50mm)
	Thickness	2.4"(61mm)
	Cut Out	2.94"(75mm)

Brand	Family	Model	Load (W)	10W(IC Rated)	15W(NON-IC)	
LUTRON	Skylark Contour	LECL-153P	150W	1-14	1-9	
		CTCL-150H	150W	1-14	1-9	
		LGCL-153PLH	150W	1-14	1-9	
		CTCL-153P	150W	1-14	1-9	
		SCL-153P	150W	1-14	1-9	
		S-600P	600W	1-19	1-13	
	Caseta	PD-6WCL	600W	1-19	1-13	
		PD-5NE	150W	1-14	1-9	
		PD-10NXD	250W	1-19	1-13	
		DIVA	DVCL-153P	150W	1-14	1-9
		Toggler	TGCL-153P	150W	1-14	1-9
		Ariadni	AYCL-153P	150W	1-14	1-9
Maestro	MACL-153M	150W	1-14	1-9		
LEVITON	Illuminatech	IPL06	150W	1-14	1-9	
	SureSlide	6672	150W	1-14	1-9	
EATON	Smart Dimmer	AAL06	300W	1-19	1-13	

Installation - ALL FIXTURES MUST BE INSTALLED IN ACCORDANCE WITH CURRENT APPLICABLE ELECTRICAL CODES.

1. Nail-in the mounting plate to the ceiling joist. Measure the position of the opening on the mounting plate for each wall. (Fig 1)
2. Install the drywall on to the ceiling. (Fig 2)
3. Cut-out a circle where the mounting plate opening is located. (Fig 3)
4. Pull the supply wire through the cut-out hole. Do the electrical supply connection in the detachable junction box (Note: A licensed electrician must do the connections as per the local electrical code). Insert the junction box into the ceiling. (Fig 4)
5. Do the connection to the luminaire and close the quick connect box. (Fig 5)
6. **Remodel applications:** Do not require the hardwire box to be firmly secured after the mounting plates, studs, joists, or structural units that have been concealed. Snap off the hardwire tabs then insert into the ceiling. (Fig 4)
7. Push the spring clips upwards and push the luminaire into the cut hole of the ceiling. Release the spring clips and align the luminaire to sit properly over the ceiling cut hole. (Figs 6 - 7)
8. Switch on the supply breaker and turn on the luminaire.



Triac DIMMING (120V only): We recommended LED/CFL dimmers that have a low range adjustment dial. After all fixtures are connected to the dimmer, adjust the dial to the lowest position before the lights start to flicker or shut down. This setting depends on the local voltage and number of fixtures per dimmer. For a typical LED dimmer rated for 150W LED load the maximum number of fixtures per dimmer.

0-10V DIMMING (120-277V AC): The dimming control wires are Grey/Pink wire (dim-) and Purple wire (dim+). Please connect the 0-10V dimmer and the driver purple wire to purple wire and Grey/Pink wire to Grey/Pink wire with the supplied block.

WARNING: DO NOT USE ANY OTHER DRIVERS EXCEPT THE DRIVERS THAT ARE INCLUDED WITH THE FIXTURE. DO NOT CONNECT MULTIPLE FIXTURES TO ONE DRIVER. DO NOT OPEN THE LIGHT FIXTURE OR THE SIDE PLATES OF THE DRIVER - NO SERVICEABLE PARTS INSIDE.

MANUFACTURER'S LIMITED WARRANTY

Your Product, when delivered to you in new condition and in original packaging, is warranted against defects in materials and workmanship as follows for a period of 3 years from the date of the original purchase. Defective products returned and proven to be defective upon inspection will be repaired, replaced with a new Product or a credit will be issued against original invoice at the discretion of manufacturer.

To avoid any doubt, "the replacement Product" does not include any removal or installation costs or expenses, including without limitation labor costs or expenses, shipping costs to return defective products or any damages that may occur during the return of product. This limited warranty is subject to the following additional conditions:

1. Products must have been installed and operated in accordance with manufacturer's instructions.
2. Products have not been subjected to accident, neglect, abuse, misuse, lightning, electrical surges or acts of God.
3. The Product has been purchased directly from an authorized distributor.
4. Purchase receipt or invoice is available for inspection.
5. This warranty is limited to Products purchased for use in regions that are within jurisdiction of Canada and USA.

This device complies with part 15 of the FCC rules. Operation is subject to the following two conditions:

- (1) This device may not cause harmful interference.
- (2) This device must accept any interference received, including interference that may cause undesired operation.

THE FOREGOING WARRANTY IS EXCLUSIVE, AND THE SOLE REMEDY FOR ANY AND ALL CLAIMS. IN NO EVENT WILL THE MANUFACTURER BE LIABLE FOR ANY SPECIAL, COMPENSATORY, INDIRECT, PUNITIVE, OR INCIDENTAL OR CONSEQUENTIAL DAMAGES INCLUDING, WITHOUT LIMITATION, DAMAGES RESULTING FROM LOSS OF USE, PROFITS, BUSINESS OR GOODWILL, WHETHER OR NOT THE MANUFACTURER HAS BEEN ADVISED OF THE POSSIBILITY THEREOF.