

# RGBCCT Tape controller

INSTRUCTIONS, WIRING DIAGRAM, FEATURES, WARRANTY

Remote	Model	G-99722
	Energy	2 AAA Batteries (Included)
	Control distance	100 ft
	Max device control	Limitless
	Total zone	4
	RGBCCT	RGB-16,000,000 Colors - CCT 27-65K

Controller	Model	G-99723
	Input	12-24 volts
	Max watt	(12v) - 188 watt (24v) 244 watt
	Terminal Diameter	26 - 14 AWG
	RF Control	2.4
	Comptible Wi-Fi apps	Tuya / Smart Life

## RF

### RF Linking Instructions

1

Press "SET" button on the controller for 12 seconds,  
or,  
Turn on & off the controllers power 4 times on-off-on-off-  
on-off-on

2

Turn on the light

3



Instantly tap any zone's on button 3 times with in 3 seconds

### RF Unlinking Instructions

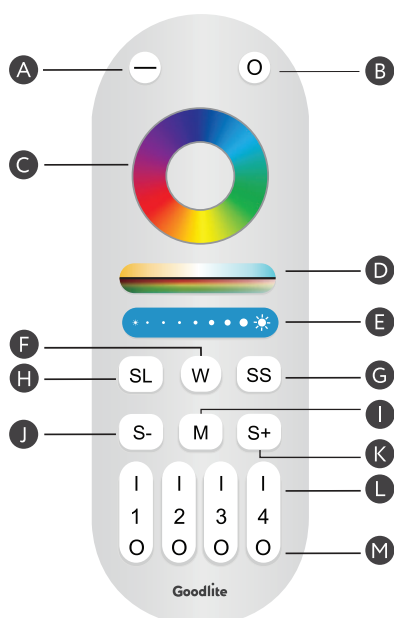
Press "SET" button on the controller for 12 seconds,  
or,  
Turn on & off the controllers power 4 times on-off-on-off-  
on-off-on

Turn on the light



Instantly tap the zone's on button 5 times with in 3 seconds

## Remote Guide



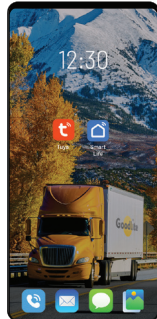
	Description	Function
A	Master ON switch	Turns on all connected devices
B	Master OFF switch	Turns off all connected devices
C	RGB Wheel	Offers 16,000,000 color options
D <sub>1</sub>	CCT Slider	Offers a range 2700K-6500K <small><sup>1</sup> (function is available when set to cct mode)</small>
D <sub>2</sub>	Color saturation slider	Adjusts the color tensity <small><sup>2</sup> (function available when set to RGB mode)</small>
E	Dimming slider	Adjusts the brightness
F	CCT Mode	Enables CCT functions
G	Select saving mode	Enables saving mode
H	Saving mode	Saves current color / brightness / saturation
I	Dynamic mode	Enables the rythm to be increased or decreased
J	Speed +	Increases color pattern rythm pace
K	Speed -	Decreases color pattern rythm pace
L	Zone ON	Turns on Zone's linked devices
M	Zone OFF	Turns off Zone's linked devices

# Wi-Fi linking instructions

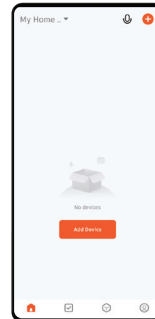
## Wi-Fi

### Tuya / Smartlife Linking Instructions

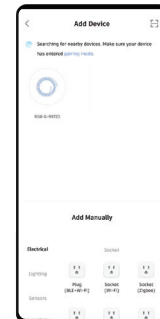
Press "SET" button on the controller for 12 seconds or Turn on & off the controllers power 4 times on-off-on-off-on-off-on  
If the device hasnt been recognized then click + and add manually



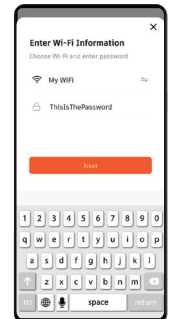
Install / Login to the app



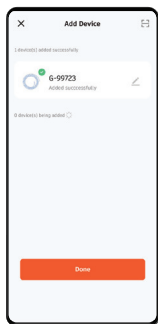
Enter the Tuya app & add the Controller



Once Controller has been recognized Tap device symbol to be added



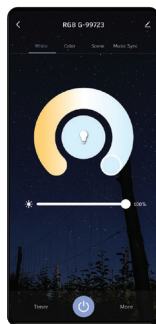
Enter your Wi-Fi information



Once device has been successfully added Tap "Done" to enter device control



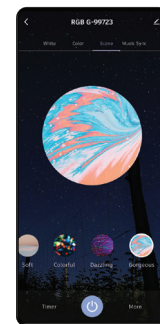
You have successfully entered the device control Tap on symbol to turn on the light



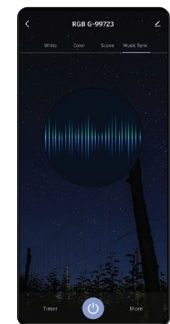
CCT CONTROL



RGB CONTROL

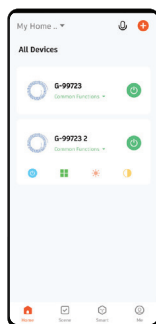


RGB PRESET SCENE

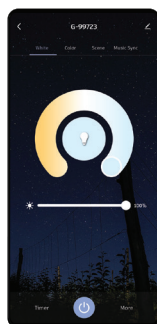


RGB MUSIC SCENE

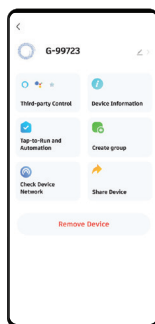
## 1. Grouping multiple controllers instructions



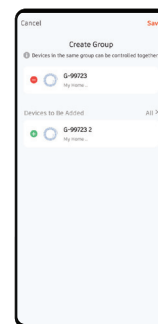
Open the app to home screen & select 1 controller symbol



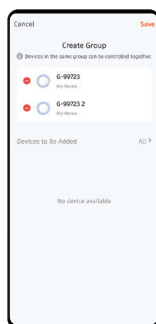
Tap the edit button located in the right top corner



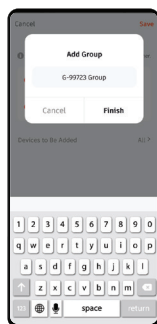
Select create group option



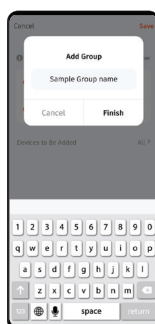
Add the controller's you'd like to have in the group



Once selected tap save located in the right top corner



Rename the group to your liking

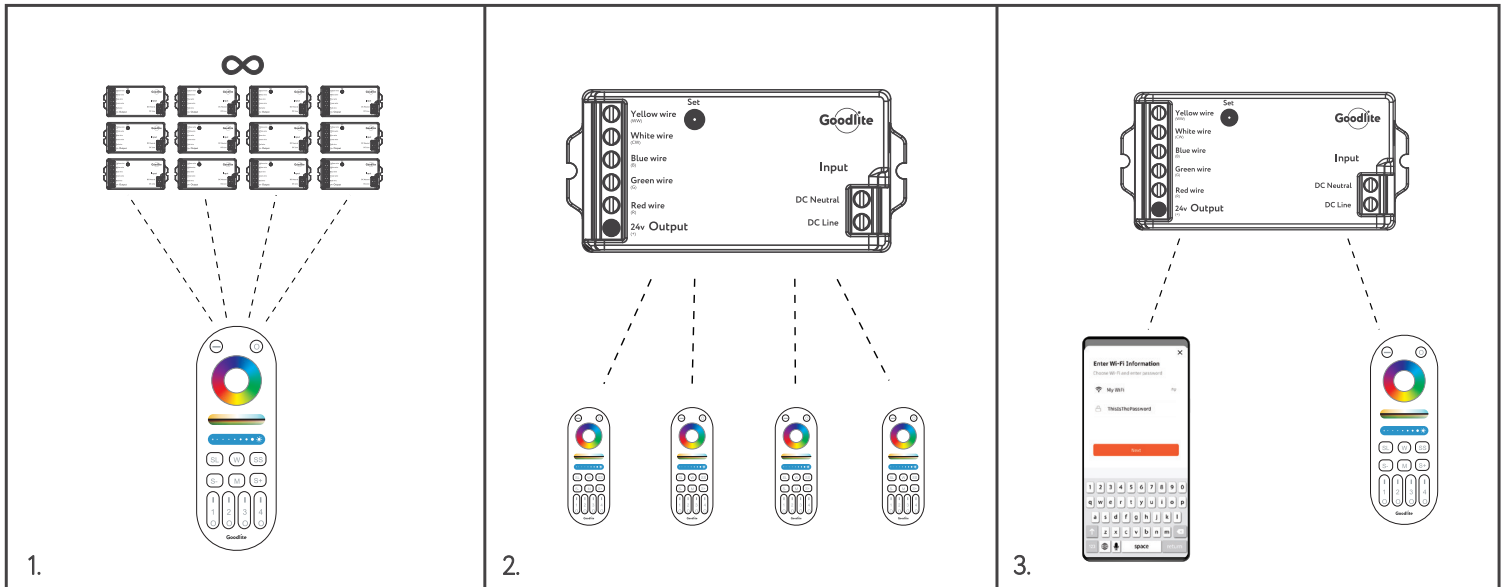


Tap finish once renamed



You have successfully created and entered the new group

1. One Zone can synchronously control unlimited controllers, as long as each controller is within 100 feet of the next.
2. One controller can be controlled & linked simultaneously to up to 4 other remotes
3. One controller can be controlled & linked simultaneously via Wi-Fi app & RF remote



## Wiring Diagram

