

# GLIMMER SURFACE MOUNT

## INSTRUCTIONS

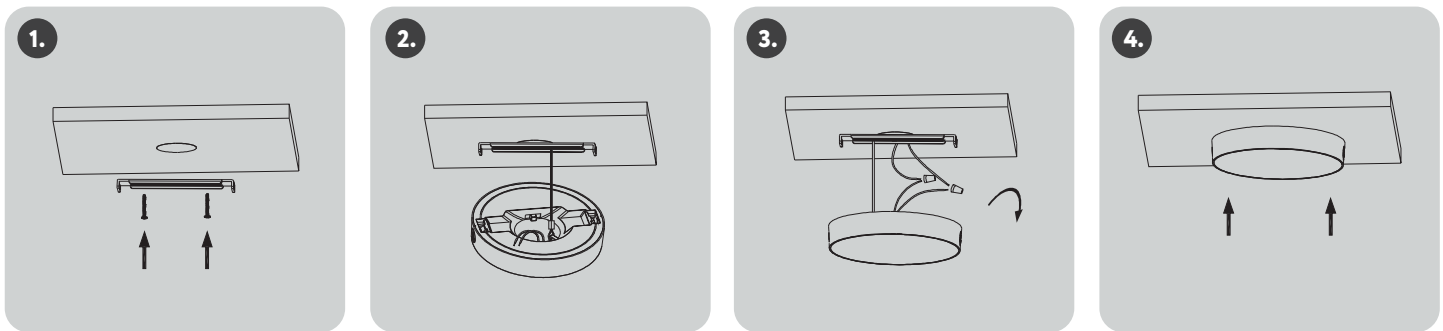
### Installation Diagram

**Step 1:** Turn off the power supply. Install the mounting bracket on the ceiling junction box using two screws provided as shown in Fig. 1

**Step 2:** Install the safety rope: secure one end to the bracket and the other end to the back cover of the luminaire.

**Step 3:** Bring the luminaire near the junction box and make wiring electrical connections by using the wires nut. - Connect the ground green lead to the ground wire of the mounting bracket. Connect the black supply lead to the line fixture lead (black). Connect the white lead to the common fixture lead (white). Push connected wires into the junction box with caution.

**Step 4:** Push the luminaire upward to fit the luminaire back side grooves with the ceiling mounted bracket. The installation is complete.



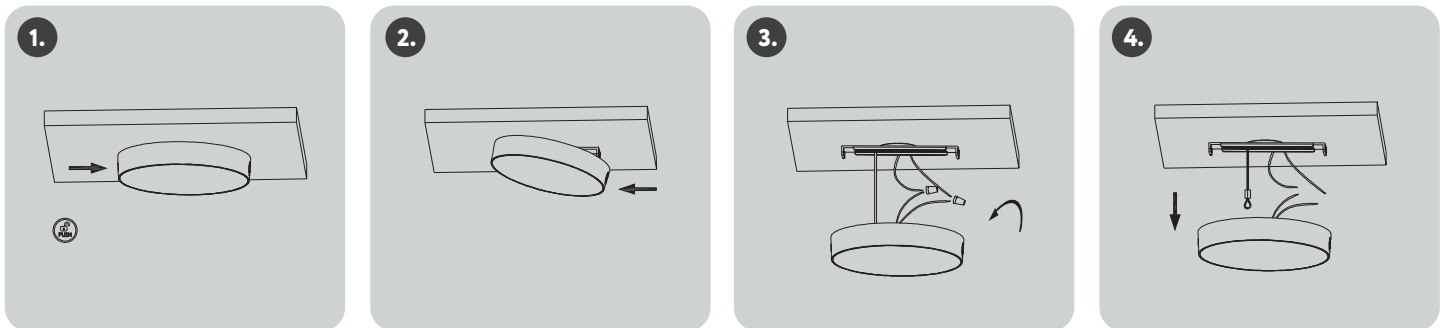
### Uninstallation

**Step 1:** There's "push" mark on both sides of the luminaire. Push the mark on one side horizontally in direction as shown in Fig. 1, then the other side of the luminaire will detach from the bracket.

**Step 2:** Push in the opposite direction as shown in Fig. 2 to detach the other side of luminaire from the bracket.

**Step 3:** Loosen the connection of the electrical wires.

**Step 4:** Unlock the safety rope to remove the luminaire.



### Important Safety Information

**1. Warning: Risk of Fire.** Use 120-277Vac, 50/60Hz circuits.

**2.** Suitable for damp locations. Before installing your lighting fixture, thoroughly review enclosed installation manual. If you do not have sufficient electrical wiring experience, please refer to a do-it-yourself wiring handbook or have your fixture installed by a qualified licensed electrician. All electrical connections must be in accordance with local and National Electrical Code (NEC) standards. Reliable operating temperature is -20 to +40 degrees Celsius (-4 to +104 degrees Fahrenheit).

**3.** Please obey fire prevention regulations, do not cover the fixture with any heat insulated materials.

**4.** Do not change the LED light source or driver inside under any circumstance.

