

4" Fire Rated Flushed Slim

Installation Instructions and Warranty Information

UL 263 & ASTM E119 Certified

Construction: 4 inch fixtures with integral LED's Isolated External driver factor installed Inside junction box. One driver for every fixture required. Power Factor >0.95 LED fixture and driver Type IC rated - approved for direct contact with insulation. Pot light is NOT required even for insulated ceilings. Lifespan: 50.000 Hours.

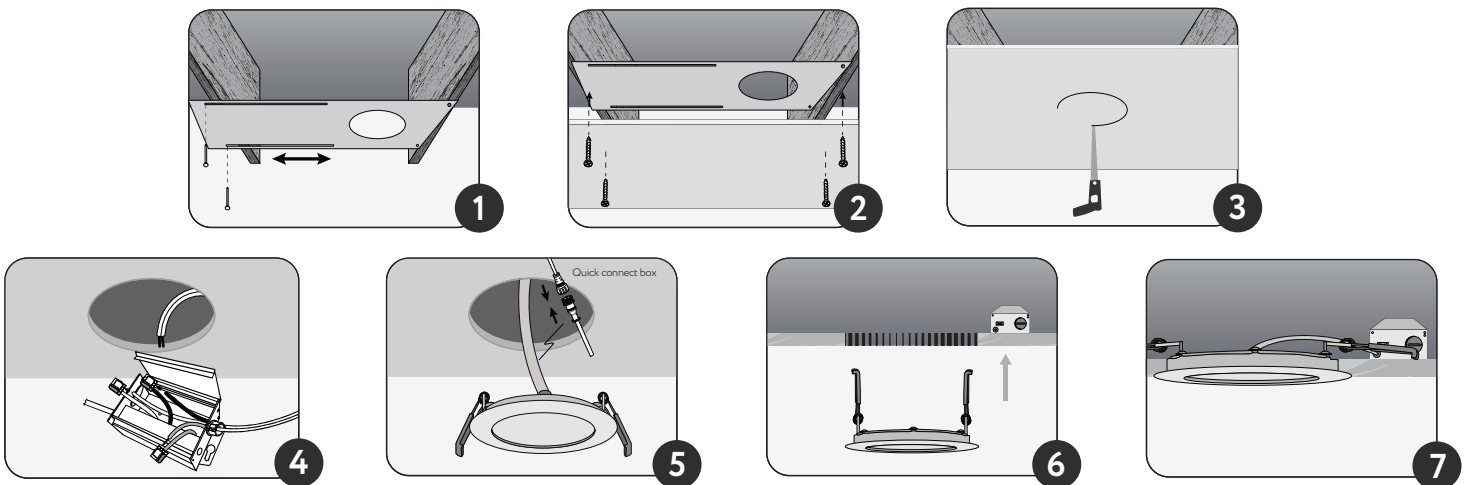
SUITABLE FOR WET LOCATION

	MODEL	G-96922	G-97022
DRIVER	INPUT	120-277V AC 60Hz	
	OUTPUT	33-38V DC 270mA	
	LAMP LIFE	50000 Hours	
	OPERATING TEMP	-40°C to +40°C	
	DIMMING	Triac Dimming (120V AC Input only) 0-10V Dimming (120-277V AC Input)	
LIGHT	ENERGY USED	12W	
	LUMINOUS FLUX	925LM	850LM
	EQUIVALENT TO	85W Halogen	
	CCT OPTIONS	27K-30K-35K-40K-50K	
	BEAM ANGLE	110 DEGREE	
	CRI	Ra>90	
	APPROVED LOCATION	WET	
	MOUNTING	OD	4.72"(120mm)
ID		3.15"(80mm)	2.48"(63mm)
THICKNSS		1.7"(43mm)	
CUT OUT		3.94"(100mm)	4.25"(108mm)

DIMMER COMPATIBILITY LIST FOR LED RECESSED LIGHTS. DIMMABLE DOWN TO 10%					
BRAND	FAMILY	MODEL	LOAD (W)	G-96922 / G-97022	
LUTRON	SKYLARK CONTOUR	LECL-153P	150W	1-12	
		CTCL-150H	150W	1-12	
		LGCL-153PLH	150W	1-12	
		CTCL-153P	150W	1-12	
		SCL-153P	150W	1-12	
		S-600P	600W	1-16	
	CASETA	PD-6WCL	600W	1-16	
		PD-5NE	150W	1-12	
		PD-10NXD	250W	1-16	
		DIVA	DVCL-153P	150W	1-12
		TOGGLER	TGCL-153P	150W	1-12
		ARIADNI	AYCL-153P	150W	1-12
LEVITON	ILLUMATECH	IPL06	150W	1-12	
	SURESLIDE	6672	150W	1-12	
EATON	SMART DIMMER	AAL06	300W	1-16	

Installation - ALL FIXTURES MUST BE INSTALLED IN ACCORDANCE WITH CURRENT APPLICABLE ELECTRICAL CODES.

1. Nail-in the mounting plate to the ceiling joist. Measure the position of the opening on the mounting plate for each wall. (Fig 1)
2. Install the drywall on to the ceiling. (Fig 2)
3. Cut-out a circle where the mounting plate opening is located. (Fig 3)
4. Pull the supply wire though the cut-out hole. Do the electrical supply connection in the detachable junction box (Note: A licensed electrician must do the connections as per the local electrical code). Insert the junction box into the ceiling. (Fig 4)
5. Do the connection to the luminaire and close the quick connect box. (Fig 5)
6. **Remodel applications:** Do not require the hardwire box to be firmly secured after the mounting plates, studs, joists, or structural units that have been concealed. Snap off the hardwire tabs then insert into the ceiling. (Fig 4)
7. Push the spring clips upwards and push the luminaire into the cut hole of the ceiling. Release the spring clips and align the luminaire to sit properly over the ceiling cut hole. (Figs 6 - 7)
8. Switch on the supply breaker and turn on the luminaire.



Triac DIMMING (120V Only): We recommended LED/CFL dimmers that have a low range adjustment dial. After all fixtures are connected to the dimmer, adjust the dial to the lowest position before the lights start to flicker or shut down. This setting depends on the local voltage and number of fixtures per dimmer. For a typical LED dimmer rated for 150W LED load, the maximum number of fixtures per dimmer.

0-10V DIMMING (120-227V AC): The dimming control wires are Grey/Pink wire (dim-) and Purple wire (dim+). Please connect the 0-10V dimmer and the driver purple wire to purple wire and Grey/Pink wire to Grey/Pink wire with the supplied block.

WARNING: DO NOT USE ANY OTHER DRIVERS EXCEPT THE DRIVERS THAT ARE INCLUDED WITH THE FIXTURE. DO NOT CONNECT MULTIPLE FIXTURES TO ONE DRIVER, DO NOT OPEN THE LIGHT FIXTURE OR SIDE PLATES OF THE DRIVER – NO SERVICEABLE PARTS INSIDE.

MANUFACTURE'S LIMITED WARRANTY

Your Product, when delivered to you in new condition and in original packaging, is warranted against defects in materials and workmanship as follows for a period of 3 years from the date of the original purchase. Defective products returned and proven to be defective upon inspection will be repaired, replaced with a new Product or a credit will be issued against the original invoice at the discretion of the manufacturer.

To avoid any doubt, "the replacement of the Product" does not include any removal or installation costs or expenses, including without limitation labor costs or expenses, shipping costs to return defective products or any damages that may occur during the of product. This limited warranty is subject to the following additional conditions:

1. Products must have been installed and operated in accordance with the manufacturer's instructions.
2. Products have not been subject to accident, neglect, abuse, misuse, lightning, electrical surges or acts of God.
3. The Product has been purchased directly from an authorized distributor.
4. Purchase receipt or invoice is available for inspection.
5. This warranty is limited to Products purchased for use in regions that are within the jurisdiction of Canada and USA. This device complies with part 15 of the FCC rules. Operations are subject to the following two conditions:
 - (1) This device may not cause harmful interference
 - (2) This device must accept any interference received, including interference that may cause undesired operation.

THE FOREGOING WARRANTY IS EXCLUSIVE, AND THE REMEDY FOR ANY AND ALL CLAIMS. IN NO EVENT WILL THE MANUFACTURER BE LIABLE FOR ANY SPECIAL, COMPENSATORY, INDIRECT, PUNITIVE, OR INCIDENTAL OR CONSEQUENTIAL DAMAGES INCLUDING, WITHOUT LIMITATION, DAMAGES RESULTING FROM LOSS OF USE, PROFITS, BUSINESS OR GOODWILL, WHETHER THE MANUFACTURER HAS BEEN ADVISED OF THE POSSIBILITY THEREOF.