

Venus 5" Round Regress

Installation Instructions

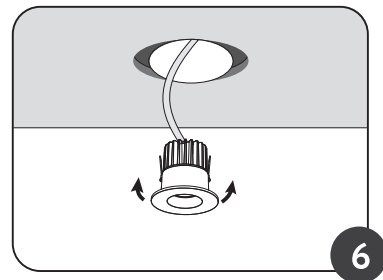
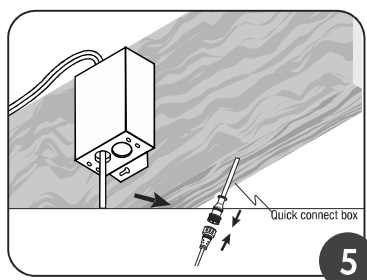
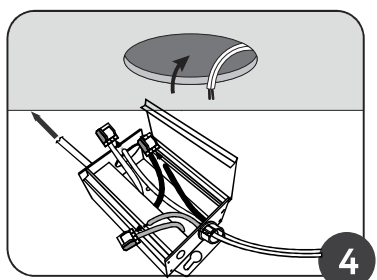
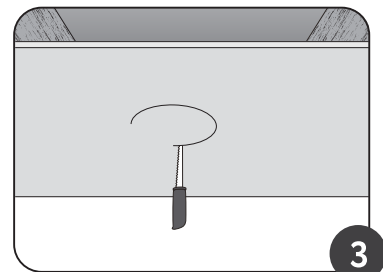
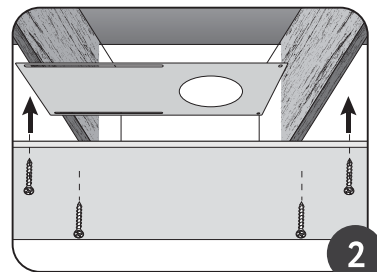
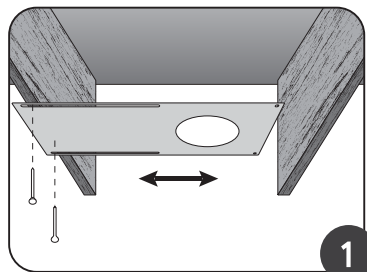
- IMPORTANT** Read all instructions before installing plate. Retain for future reference.
- SAFETY:** Turn the power at off main fuse/breaker panel before attempting any electrical work. This luminaire must be wired in accordance with local electrical codes and ordinances. Grounding connections should be done in the detachable junction box.
- WARNING:** Make sure the power is OFF from the electrical panel before starting or installation attempting any maintenance.

	Model	G-20216 / G-20195	G-20218 / G-20196
DRIVER	Input	120V AC 60Hz	120V AC 60Hz
	Output	33-38V DC 550MA	33-38V DC 550MA
	Lamp Life	50000 Hours	50000 Hours
	Operating Temperature	-40°C to + 40°C	-40°C to + 40°C
	Energy used	23W	23W
LIGHT	Luminous Flux	2000LM	2000LM
	Equivalent to:	200W halogen	200W halogen
	CCT Options	27K/30K/35K/40K/50K	27K/30K/35K/40K/50K
	Beam Angle	60 Degree	60 Degree
	CRI	Ra > 90	Ra > 90
	Approved Location	WET	WET
	OD	5.7"(145MM)	5.7"(145MM)
MOUNTING	ID	3.43"(87MM)	3.03"(77MM)
	Thickness	2.91"(74MM)	2.91"(74MM)
	Cut Out	5"(127MM)	5"(127MM)

Brand	Family	Model	G-20216 / G-20195	G-20218 / G-20196
LUTRON	SKYLARK CONTOUR	CTCL-153PDH	1-6	1-6
		CTCL-153P	1-6	1-6
		CT-600P	1-6	1-6
	DIVA	DVCL-153P	1-6	1-6
LEVITON	DECORA	6672	1-6	1-6
		6674	1-6	1-6
PASS & SEYMOUR	HARMONY	HCL453PTCCCV6	1-6	1-6

Installation

- Nail-in the mounting plate to the ceiling joist. Measure the position of the opening on the mounting plate from each wall. (Fig.1)
- Install the drywall on to the ceiling. (Fig.2)
- Cut-out a circle where the mounting plate opening is located. (Fig.3)
- Pull the supply wire through the cut-out hole. Do the electrical supply connection in the detachable junction box (Note: A licensed electrician must do the connections as per the local electrical code). Insert the junction box into the ceiling. (Fig.4)
- Do the connection to the luminaire and close the quick connect box. (Fig.5)
- New construction applications:** Hardwire box shall be firmly secured to studs, joists, or similar fixed structural units
- Remodel applications:** Do not require the hardwire box to be firmly secured after the mounting plates, studs, joists, or structural units that have been concealed. Snap off the hardwire box tabs then insert into ceiling FIG 4
- Push the spring clips upwards and push the luminaire into the cut hole of the ceiling. Release the spring clips and align the luminaire to sit properly over the ceiling cut hole. (Fig.6)
- Switch on the supply breaker and turn on the luminaire.



Compatible fixtures

Hole size
Ø5" (127mm)